

INSTALLATION GUIDE

•

OWNER'S GUIDE

REMOTE STARTER IMMOBILIZER • SILENT GUARD

CONTENTS

System Features.....	1
System Components.....	1
Required Tools.....	1
Technical Assistance.....	1
Before You Begin.....	1
Precautions.....	1-2
Making Connections.....	2-3
Locating and Making Connections.....	3-4
Antenna Placement.....	4
How to use Your Remote Transmitter.....	4
OEM Wiring Chart.....	5



Technical Assistance

All tech personnel are expertly qualified to answer any technical questions.
Technicians are available Monday through Friday from 9:00 a.m. until 8:00 p.m. and Saturday 10:00 a.m. until 4:00 p.m.

Address

288 Canton Avenue • Wintersville, Ohio 43953

Telephone

Phone: 740-264-4710 • 800-878-8007 • Fax: 740-264-7306

SYSTEM FEATURES

Two-Button Extended Range Remote Control	Remotely immobilize your car's engine from an extended distance.
Valet Mode	Remotely turn your immobilizer on and off.
Limited Lifetime Warranty	Guarantees life-long protection.

SYSTEM COMPONENTS

Your system includes:

1-Installation & Operation Guide
1-Main Control Module and Harness

2-Two Button Remote Transmitters
1-High Luminescence L. E. D. status indicator

REQUIRED TOOLS

You will need a computer-friendly test light, electrical tape, extra 16 awg wire and wire strippers or cutters.

TECHNICAL ASSISTANCE

Should you need help. First check our website at www.bulldogsecurity.com/wires.htm or call our toll-free Tech Support Hotline Monday through Friday 9AM-8PM and Saturday 10AM-4PM EST at 800-878-8007.

You must give the following information:

- Name
- Telephone Number with Area Code (Fax number if applicable)
- Year, Make, and Model of the vehicle
- The model number of the system you are installing
- The type of assistance you are requesting

If you give the above information you will be called back as soon as possible, usually within 10 minutes.

BEFORE YOU BEGIN

Congratulations, you have purchased the most advanced remote control immobilizer system ever made. Your new system is a technological breakthrough utilizing the most advanced state of the art technology and components. It is computer controlled and manufactured in the U.S.A. The dependability and variety of features make Bulldog Security the leader in the industry. Enjoy your new system for years to come!

We recommend you read this installation manual thoroughly before starting the installation. This manual will supply you with time-saving information. Each step will guide you to a correct installation.

You will need to decide where you will be placing the L.E.D. before you begin the installation.

Since there are many different makes and models of vehicles, it is impossible for this manual to cover every wiring configuration. Instead, this manual will help you determine the correct connections and testing procedures for your vehicle.

PRECAUTIONS

SAFETY FIRST!

A periodic safety check is recommended to ensure that your system is in proper working order.

DO NOT use mechanical wiring connections, such as **crimp or snap together taps**. Follow instructions on pages 6-8.

DO NOT disconnect the battery if the vehicle has an anti-theft-coded radio or is equipped with an airbag. Doing so may cause a warning light to be displayed and may require a trip to the dealer to be corrected.**1**

DO NOT leave the interior or exterior lights on for an extended period of time as it may cause battery drain. Remove the dome light fuse from the vehicle's fuse box.

DO NOT mount the control module until all connections have been made and tested. Using wire ties or double sided tape **MOUNT THE MODULE UNDER THE DRIVER'S DASH.**

TESTING YOUR WIRES

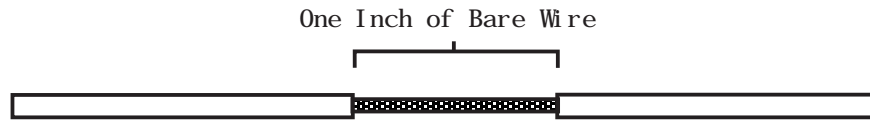
When testing for a positive or negative voltage, you must use a computer friendly test light (logic probe) or a volt/ohm meter. Make sure to probe and test each wire before making your connections.

MAKING WIRING CONNECTIONS

1. Strip back two inches of insulation on the wire from the keyless entry.



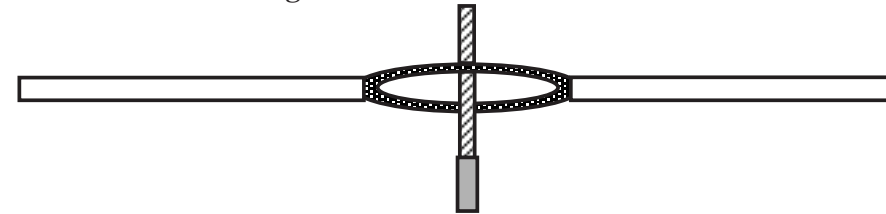
2. Strip back one inch of insulation on the wire you need to connect to.



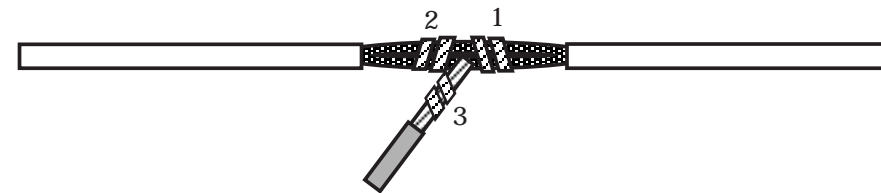
3. Separate the vehicle wire as shown. Make the separation large enough to fit the other wire through.



4. Insert the wire from the unit through the hole as shown.



5. Wrap the wire around one side then the other and finally around itself as shown.



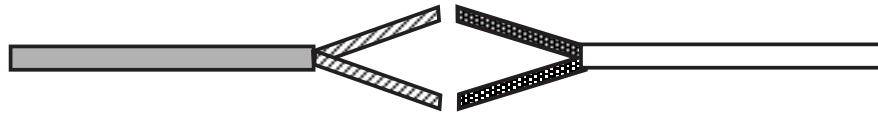
6. Use electrical tape to wrap. Be sure to cover the wire about two inches on either side of the connection. First pull the wire that you have just connected along side the wire you connected to, tape and wire tie them together. Use this method for all connections.



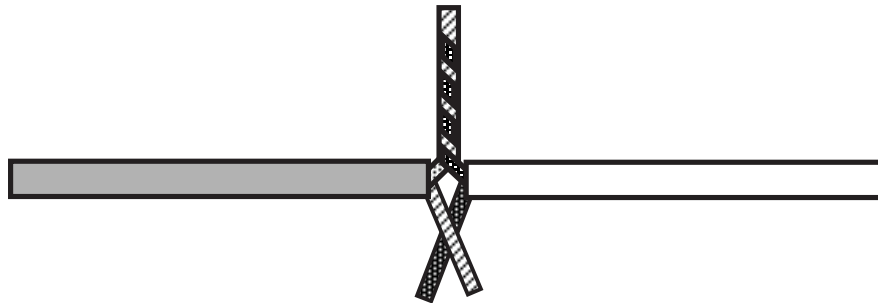
CAUTION: All wires must be wrapped and taped.

MAKING END TO END CONNECTIONS FOLLOW THESE INSTRUCTIONS

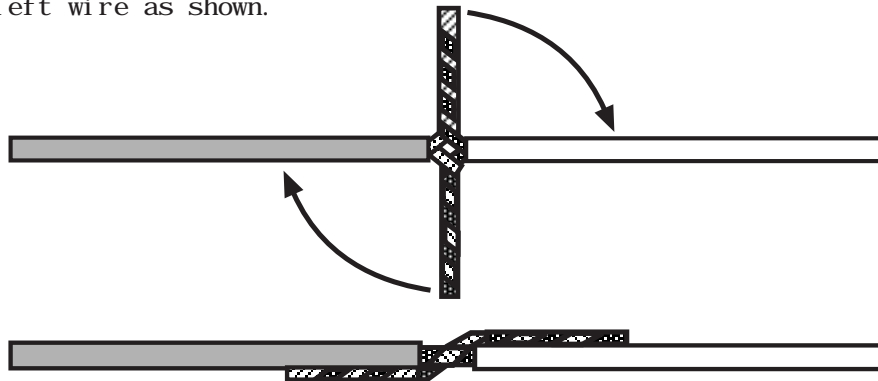
1. When tying two separate wires together at their ends, strip back 1" of insulation on both wires and separate the strands of wire as shown below.



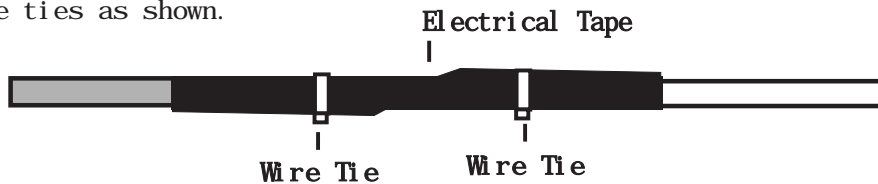
2. Twist upper wires together, twist lower wires together as shown.



3. Lay upper twisted pair of wires over right wire as shown. Bring lower twisted pair of wires up to meet the left wire as shown.



4. Use electrical tape to wrap, be sure to cover about 2 inches on either side of connection. Secure with wire ties as shown.



Use this method ONLY when connecting two separate wires end to end.

LOCATING & MAKING CONNECTIONS

GROUND

Connect the ground wire #7 to a clean unpainted metal surface under the dash.



Note: Remove any paint from under bolt.

12 VOLT CONSTANT

Connect the wire marked #8 (constant +12 volts) to constant 12 volts located at the ignition harness.
NOTE: Silent Guard will emit a series of chirps to indicate the unit is powered up.

IGNITION INPUT / IGNITION OUTPUT

Locate the primary factory ignition wire located at the ignition harness near the steering wheel column, cut in two. Connect the wire marked #1 (ignition input) to the vehicle's factory ignition wire leading from the ignition key side. Connect the wire #4 (ignition output) to the other half of the factory ignition wire.

STARTER INPUT / STARTER OUTPUT

Locate the crank (starter solenoid) wire in the ignition harness, cut in two. Connect the wire marked #2 (starter input) to the vehicle's factory crank wire from the ignition key side. Connect the wire marked #5 (starter output) to the other half of the factory crank wire leading out to the starter solenoid (engine).

FUEL INPUT / FUEL OUTPUT

Locate the fuel pump power wire, in some vehicles you can find this wire located at the factory fuse panel, it will be labeled fuel pump or injectors. If your vehicle doesn't have this, please refer to your vehicle's wire schematic. Once you locate the wire, cut it in two. Connect wire #3(fuel pump input) to the 12 volt supply going to the fuel pump ignition key side. Connect wire #6 (fuel pump output) to the half of the factory fuel pump wire leading out to the fuel pump.

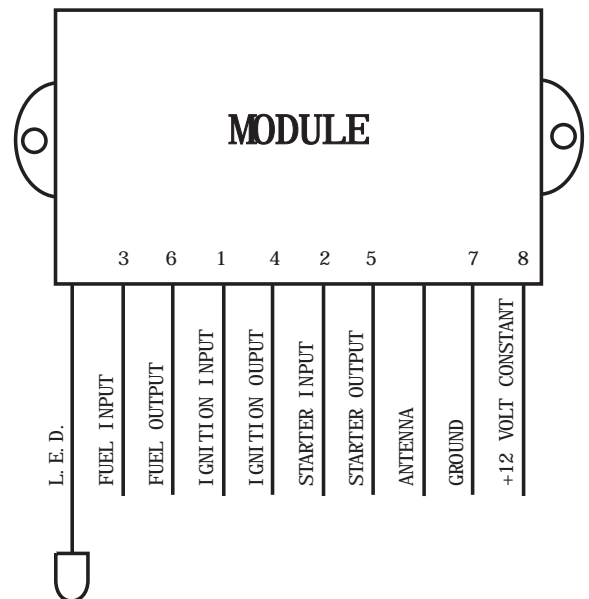
L. E. D.

Locate a good spot for the L. E. D., visible from all sides of the vehicle. If you wish to drill a hole, use a 5/16 inch drill bit to mount the L. E. D. If you or your customer wishes not to have the L. E. D. permanently mounted, use the included double-sided adhesive L-bracket to mount the L. E. D.

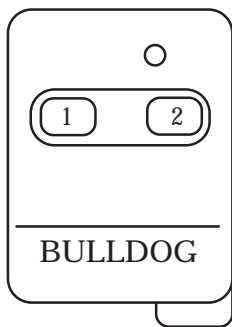
ANTENNA PLACEMENT

ANTENNA

For best results, run the antenna (small gauge unmarked wire from the front of the unit) as straight as possible. **Do not place the antenna next to any metal parts or the vehicle's main computer control module.**



HOW TO USE YOUR REMOTE TRANSMITTER



BUTTON #1
Disarm/Valet Off

BUTTON #2
Valet On

Disarm

To be able to start the vehicle, press and release Button #1. The LED will stop flashing and the Silent Guard will emit one chirp. After disarming the unit, a 30 second window will open to allow the user to start the vehicle. If the vehicle is not started within 30 seconds the unit will automatically immobilize your vehicle. After this 30 second window has expired, and the LED will flash.

Arm

The Silent Guard is designed to automatically arm 30 seconds after the ignition is turned off, unless the system is in valet mode.

Enter Valet Mode

Press and hold Button #2 for 5 seconds. The LED will light up constantly and the Silent Guard will emit two chirps. While in valet mode, the Silent Guard will constantly chirp when the ignition is in the ON position.

Exit Valet Mode

Press and release Button #1. The LED will shut off and the Silent Guard will emit one chirp. The Silent Guard will automatically arm in 30 seconds.

OEM WIRING CHART

MAKE	CONST. 12V+	STARTER	IGN 1	IGN 2	IGN 3	ACCESS.	LOCATION
GM	RED	YELLOW VIOLET	PINK	WHITE PNK/WHT BLUE/WHT	GREEN	ORANGE BROWN	IGN. HARNESS
FORD CORP.	YELLOW	RED/BLUE WHT/PINK	RD/L. GRN BRN/PINK	BLK/GRN PNK/BLK	RED/BLK	GRAY/YEL	IGN. HARNESS
CHRYSLER CORP.	RED	YELLOW	BLUE	BLK/WHT	N/A	BLK/OR	IGN. HARNESS
HONDA CORP.	WHITE	BLK/WHT	BLK/YEL	YELLOW	N/A	BLK/WHT	IGN. HARNESS
MAZDA	BLACK	BLK/YEL BLK/BLUE	BLK/WHT	BLK/RED	N/A	BLUE	IGN. HARNESS
MI TSUBI SHI	RED/BLACK	BLK/YEL BLK/RED	BLK/WHT	BLUE/BLK	N/A	BLUE WHITE	IGN. HARNESS
NI SSAN CORP.	WHITE/RED	BLK/YEL BLK/WHT	BLK/RED	BLK/PNK RED/YEL	N/A	WHT/BLUE	IGN. HARNESS
SUBARU BLK/WHITE	BLK/YELLOW	BLK/YEL	BLACK RED/YEL	BLUE	N/A	BLUE	IGN. HARNESS
TOYOTA CORP. WHITE/RED	WHITE BLACK	BLK/WHT	BLK/OR BLUE/RED	BLK/YEL	N/A PNK/BLUE	BLUE/RED	IGN. HARNESS
VW BLK/YEL	RED	RED/BLK BRN/RED	BLACK	BLK/YEL	N/A	BRN/RED	IGN. HARNESS