

Access 2 Communications, Inc. produces the world's most innovative and reliable car alarms, remote starters, keyless entry systems and starter immobilizers.

Access 2 Communications, Inc. is not an importing or distribution company. Our products are designed with patented technology and produced in the United States with robotics to insure flawless performance and the highest quality control.

Our easy to use and install systems cannot be damaged by improper installation or weather conditions which means your system will never give you a false alarm.

Look for our products and services on the world wide web where you'll find a highly trained support staff to provide assistance to get you on your way to a safer, more convenient driving experience.

SYSTEM FEATURES

One-Piece Self-Contained Fast and easy to install, usually five to ten minutes with no experience.

Extended Range Four Button Remote with Slider Protection Remotely activates your alarm, car finder and instant panic from a safe distance.

High Quality Siren 127db multi-tone siren deters thieves from further tampering.

Remote Programmable Current Sensor The alarm will sound with changes in current. (Example; a dome light or ignition switch)

Remote Adjustable Electronic Dual Stage Sensor Not sensitive to temperature or age, extremely sensitive to shock or glass breakage. (Example; a light tap and the alarm will chirp three times. A harder Shock impact and the siren will sound.)

Full Time Instant Panic Should you feel threatened, you can remotely activate the siren with the press of a button.

Automatic Alarm Reset If the alarm is violated, it will stop and rearm itself after 30 seconds.

Remote Car Finder Helps you locate your vehicle in a crowded parking lot by chirping eight times. (Only when the system is armed.)

Scan Deterrent Protects your car from scanning devices often used by thieves to disarm systems.

Code Learning Allows your system to learn new remotes if yours is lost or you need additional remotes.

Limited Lifetime Warranty Guarantees life-long protection.

TECHNICAL ASSISTANCE

Should you need help. First check our website at www.jbstech.com or call our toll-free Tech Support Hotline Monday through Friday 9AM-8PM and Saturday 10AM-4PM EST at 800-878-8007.

You must give the following information:

- Name
- Telephone Number with Area Code (Fax # if applicable)
- Year, Make, and Model of the vehicle
- The model number of the system you are installing
- The type of assistance you are requesting

If you give the above information you will be called back as soon as possible, usually within ten minutes.

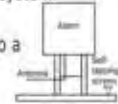
INSTALLATION INSTRUCTIONS

You will need a screwdriver or screwdrill to mount the siren.

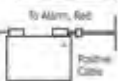
Step 1: Locate a solid, well grounded metal surface under the hood. Any metal fender, firewall or metal wheel well will do. For the loudest sound, the siren should point down. **CAUTION: Do not mount close to exhaust or other high temperature areas. Make sure the alarm, as well as the metal it is mounted to, is solid with no moving parts nearby.** The siren should not point up, as moisture could collect in the siren horn and damage the system.



Step 2: Use three self-tapping screws (included) to secure the alarm. Screw into a well-grounded metal surfaces. **CAUTION:** You must use all three screws.



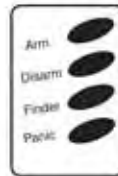
Step 3: Connect the RED power wire to any constant +12 volt supply. (Ex.; the battery) If installation is correct, the alarm will chirp three times.



Step 4: For maximum range, keep the yellow antenna wire as straight as possible.

Note: If you have a cellular telephone, radar detector or other mobile radio equipment; such as stereo amplifiers, they must be turned off before you leave your vehicle. Otherwise, your alarm may detect the power drain and sound the alarm.

USING YOUR TRANSMITTER



BUTTON #1
Arms your system.

BUTTON #2
Disarms your system.

BUTTON #3
Helps you locate your vehicle in a crowded parking lot. (Only when system is armed.)

BUTTON #4
Provides you with personal protection.

NOTE: Before operating your alarm, slide the protector down (attached to the back of your remote transmitter) snap off the back and snap onto the front.

Arming

Press Button #1 (Arm) the alarm will chirp once and arm. **NOTE: Your alarm will ignore all violations, current and shock, for approximately 45 seconds after arming.**

Disarming

Press Button #2 (Disarm). The system will chirp twice indicating that the system is disarmed. **NOTE: If you hear three chirps when disarming, the vehicle experienced an impact violation while armed. If you hear four chirps when disarming, the vehicle experienced a current violation while armed. This is a good time to check your vehicle for possible damage or an attempted break in.**

USING YOUR TRANSMITTER

Car Finder

While the system is armed, press and release Button #3 (Finder). The alarm will chirp eight times. This is used to locate your vehicle in a crowded parking lot.

Instant Panic

Press and release Button #4 (Panic) to sound the instant panic siren. The siren will activate for 30 seconds and then shut off. To stop the siren before the 30 seconds, press any of the four buttons. This feature functions at all times; if the alarm is armed, disarmed, or if the engine is running or not.

Dual Stage Shock Sensor

A light impact will cause the alarm to respond with three chirps. Continued tampering will cause the alarm to respond with full alarm violation.

Adjusting the Shock Sensor Sensitivity

To adjust the shock sensor, disarm the system, press and hold Button #3 (Finder) until the alarm chirps four times (approximately five seconds), immediately release the button. Tap your vehicle's hood above the alarm at the sensitivity level you wish. The harder you hit the car the less sensitivity the alarm will be. The alarm will then chirp three times. The shock sensor is now set at this sensitivity. Any shock that is equal to, or greater than this sensitivity, will sound the alarm. Set the sensitivity as often as you wish; however, the sensitivity level will remain set until the battery is disconnected or you reset it. If you do not tap the car it will automatically go to maximum sensitivity. This setting is only acceptable if the car is parked inside a garage. **NOTE: The factory setting on the shock sensor should be acceptable for most vehicles.**

To Turn Off Current Sensor

Disarm the system. Press and hold Button #4 (Panic) until the alarm chirps twice (approximately five seconds). This indicates that current sensing is now turned off. To turn current sensing back on: disarm the system. Press and hold Button #4 (Panic) until the alarm chirps once (approximately five seconds). This indicates that current sensing is now turned on. **NOTE: Factory setting is current sensing ON.**

Adding A New Transmitter (Disarm alarm)

Press and hold Button #1 (Arm). The alarm will chirp once. Keep Button #1 held until the alarm chirps one more time. Release Button #1 on the working remote and press and release Button #1 (Arm) on the new remote. The unit will chirp once more.

Special Situations

Sometimes when you park your car in heavy rain, near a construction zone, near trucks, etc. you may wish to lower the sensitivity of your alarm **FOR THIS ARMING ONLY**. To lower the sensitivity by 50%, press Button #1 to arm and then again within two seconds after arming. To shut the shock sensor off completely, press Button #1 twice within two seconds after arming. The next time the alarm is set it will go back to the original setting.

Transmitter Battery

The battery in your Bulldog transmitter is engineered for life. If the battery fails or the L.E.D. is not illuminating when pressing a button, contact Bulldog Security for a replacement battery or replace the battery with a Part #A-23, 12 volt battery. To change the battery, simply insert a coin on the keychain side and twist to open the transmitter. Replace the battery and snap the transmitter back together.

YOUR WARRANTY

Here's how your warranty works:

Access 2 Communications (A2C) warrants to the original customer, and the original car a limited lifetime warranty. Within 12 months of purchase, A2C will repair or replace, our option, any defective system at no charge. After 12 months from date of purchase, A2C will, at our option, repair or replace the system for a \$30 shipping and handling fee.

Installation, labor, removal and reinstallation are not the responsibility of A2C. Registration must be completed and sent in within fourteen (14) days of purchase in order to validate the warranty. A2C makes no warranty against the theft of a vehicle or its contents. This warranty is not to be construed as an insurance policy against loss.

DISCLAIMER

A2C disclaims the warranty of merchantability and fitness for any particular use. This disclaimer shall be effective as to all claims of any kind made by or through any wholesaler, retailer, consumer or any other person or entity. Some states do not permit the disclaimer of implied warranties in some sales. Hence, this disclaimer may not apply to you.

LIMITATION OF REMEDIES

Consumer's remedy is limited to repair or replacement of the unit, and in no event shall exceed the purchase price. Incidental, consequential and/or indirect damages are expressly disclaimed. NO person or entity is authorized to alter, amend or increase this limited warranty.



Creating A
Higher Standard

Access 2 Communications, Inc.
225 Technology Way
Steubenville, OH 43952

Phone: 740-282-1212
Toll Free: 800-878-8007
Fax: 740-282-1201

www.bulldogsecurity.com
email:
techsupport@A2-C.com

MADE IN AMERICA,
GUARANTEED FOREVER



INSTALLATION GUIDE

OWNER'S GUIDE

Alarm Model 2010

Access 2 Communications, Inc.
Creating A Higher Standard