

This module is needed if you are installing a remote starter on any of the following vehicles:

Acura 3.2TL 98+, CL 97+, Integra 00+, MDX 01+, NSX, RL 98+, RSX 01+, TL 98+, TSX 04+; Buick Century 97+, LeSabre 90-96, 00+, Park Avenue 91+, Regal 93-96, Riviera 93-96, Roadmaster 93-96, Rendezvous 02+, Skylark 96-98; Cadillac Allante, Brougham, CTS 03+, Catera, DeVille 92+, Eldorado 89+, Escalade 99+, Escalade EVS 03+, Escalade EXT 02+, Fleetwood 90-96, SLS/STS 97+, Seville 90+; Chevrolet Astro Van 98+, Blazer 98+, Camaro 86+, Cavalier 96+, Corvette 88+, Express 97+, Full-size Pickup 98+, Impala 00+, Lumina 96+, Malibu 97+, Monte Carlo 96+, S-10 98+, Savannah, Suburban 98+, Tahoe 98+, Trailblazer 02+, Van 98+, Venture 99+; Chrysler 300M 99+, Concorde 98+, LHS 99+, PT Cruiser 01, Pacifica 03+, Sebring Convertible 98+; Dodge Intrepid 98+, Neon 00+; Ford Contour 97+, Crown Victoria 98+ (optional), Escape 01+, Excursion 00+, Expedition 97+, Explorer 98+, Focus 00+, Mustang 98+, Pickup (F150/F250) 98+, Ranger 99+ (optional); Taurus 96+, Thunderbird 02+, Windstar 00+; GMC Denali 99+, Envoy 99+, Envoy XL 02+, S-15 Jimmy 98+, Safari 98+, Sierra Pickup 98+, Sonoma 98+, Suburban 98+, Yukon 98+, Yukon XL 00+; Honda Accord 98+, CRV 02+, Civic 01+, Element 02+, Insight 00+, Odyssey 98+, Pilot 03+, Prelude 98+, S2000; Infiniti FX35/FX45 03+, G20 00+, G35 03+, I30 98+, I35 03+, M45 03+, Q45 98+, QX4 00+; Isuzu Ascender 03+, Hombre 98+; Jeep CJ (Wrangler) 99+, Grand Cherokee 99+, Liberty 02+; Lexus All 97+; Lincoln Aviator 03+, Blackwood 02+, Continental 97+, LS 2000+; Mark VIII 97+, Navigator 97+, Town Car 97+; Mercury Cougar 99+, Marauder 03+, Mountaineer 98+, Mystique 97+, Sable 96+; Nissan 350Z 03+, Altima 00+, Maxima 98+, Murano 03+, Pathfinder 99+, Sentra 00+; Oldsmobile Achieva 95+, Alero 99+, Aurora, Bravada 98, Cutlass 97+, Eighty-Eight, Intrigue 98+, Ninety-Eight, Silhouette 99+; Pontiac Aztek 01, Bonneville 89+, Firebird 88+, Grand Am 96+, Grand Prix 92-96; Montana 99+, Sunfire 96+; Saturn All 97+; Toyota Avalon 98+, Camry 98+, Highlander 01+, Land Cruiser 98+, Prius 01+, RAV4 01+, Sequoia 01+, Sienna 01+, Solara 99+, Supra 98+; Volkswagen Beetle 98+, Golf 98+, Passat 98+, Volvo All 98+.

UNIVERSAL BYPASS MODULE

Used when installing a
remote starter on any
vehicle equipped with
a factory anti-theft
system.

MODEL 791P

791 UNIVERSAL BYPASS MODULE

The Model 791 interface module is used when installing remote start products in any vehicle equipped with an anti-theft system including BMW, Audi, Volvo and Mercedes. The Ford PATS, GMs PK3, VATS, Passlock I, Passlock II or any other transponder systems. This model allows easy interfacing while maintaining the OEM system's integrity. The Model 791 has no effect on factory anti-theft system when the remote start is not in use. The factory anti-theft system remains fully functional.

BEFORE YOU BEGIN

Refer to your system's instruction manual, and our website at www.bulldogsecurity.com, to determine what type of anti-theft system your vehicle is equipped with.

It will be necessary to open the 791 Module to remove the wiring harness before installation. To do so, simply insert a straight shank screwdriver into the two wide slot holes in the bottom of the module. Plug the wiring harness into the module. NOTE: If you are using the 791 Module as a transponder bypass you must insert a spare ignition key inside the black ribbon coil (as illustrated on page 9) then snap both halves of the module back together. This key must be a key that starts the vehicle.

WARRANTY VALIDATION

PLEASE FILL OUT THIS FORM AND MAIL IT
IN TO REGISTER YOUR WARRANTY

Your Name _____

Address _____

Email Address _____

Dealer Name _____

Address _____

Date of Purchase ____/____/____

Model #791

Make/Model of Car _____

Year of Car _____

V.I.N. # _____

Final Quality Check By _____

Mail to: JBS Technologies
225 Technology Way
Stuebenville, Ohio 43952

PIN OUT AND WIRE COLORS

Pin	Color	Function
#1	Violet	Bulb Check
#2	Blue	Ignition Neg. Trip
#3	Green	Not Used
#4	Yellow/Black	Crank Wire
#5	Yellow	Bypass Output
#6	White	Ignition Pos. In
#7	Orange	Ground
#8	Red	Power

Plus 2-PIN:
TRANSPONDER LOOP

MODEL
791

PASSKEY (VATS) INSTALLATION (GM only)

This FUEL SYSTEM shutdown anti-theft system is based on a pellet (resistor) built into the steel shaft of the ignition key. When the key is inserted into the ignition switch, the VATS (vehicle anti-theft system) computer reads the value of the resistor to make sure that it matches the programmed code and then turns on the fuel system so the vehicle can be started.

1. Locate two (2) wires in an ORANGE (or sometimes BLACK) vinyl tube coming down from the ignition switch. This tube will contain two (2) WHITE 22 ga. wires or one WHITE and one PURPLE wire.
2. Connect the YELLOW wire from the 791 bypass to the WHITE wire in the VATS tube that shows voltage when the key is turned to the ON or RUN position.
3. Connect the ORANGE wire securely to the other WHITE or PURPLE wire that shows ground with the key in the on or run position.
4. Connect the RED wire from the 791 bypass to a constant +12 V supply.
5. Connect the WHITE wire from the 791 bypass to the vehicle ignition wire or the large WHITE wire on the remote starter connected to the PINK ignition wire on the vehicle.
6. Connect the BLUE wire to the center WHITE wire on remote starter modules with an external relay harness or the WHITE wire labeled "ignition negative" or the YELLOW wire and sometimes the YELLOW WITH BLACK STRIPE wire marked "security bypass out".
7. Attach the YELLOW WITH BLACK STRIPE wire to the large YELLOW WITH BLACK STRIPE wire on the remote starter that is connected to the starter/crank wire onthe

ERASING MEMORY

To Erase the Memory

Power up the bypass module then unplug the eight wire harness from the unit. Attach the BLUE wire from the eight wire harness to ground and plug the eight wire harness back into the bypass module. When the RED light illuminates, unplug the eight wire harness and disconnect the BLUE wire from ground. The bypass module is now ready to learn a new code.

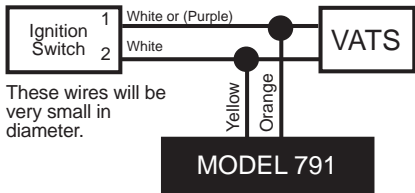
PASSEY (VATS) INSTALLATION (GM only. cont.)

STRIPE wire on the remote starter that
is connected to the starter/crank wire onthe
ignition switch harness.

8. The PURPLE and the GREEN wires are not used and should be taped up.
9. Put the key in the ignition switch and start ..the vehicle with the key.
10. Wait until the L.E.D. light on the 791 goes out. (See page 9 for LED placement.)
11. Turn off the vehicle the system has learned the resistor value.

NOTE: If the light does not illuminate on the 791 when you first plug it in, you need to erase the memory. See page 10.

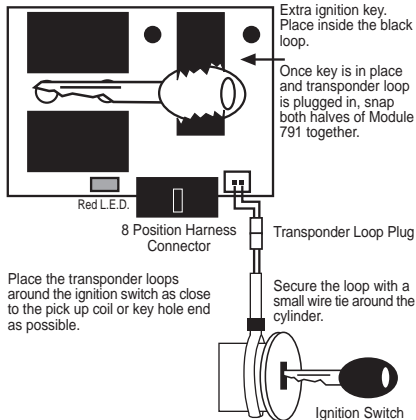
Never cut, or probe into a small yellow tube as



NOTE: Do not plug the WHITE loop connector into the module unless your vehicle is equipped with a transponder system.

TRANSPONDER INSTALLATION Ford, Chrysler, all imports and some GMs

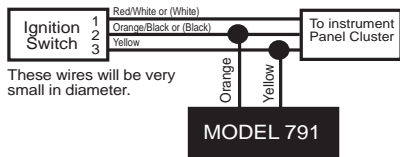
5. Attach the ORANGE wire to ground. All other wires on the module are not used. Tape the ends.
6. Plug the loop wire into the white plug inside the module.
7. When bypassing GMs transponder (PK3), attach the RED wire not to +12v constant, but to the heavy gauge YELLOW WITH BLACK STRIPE wire from your remote starter that is connected to the starter/crank wire on the vehicle.



PASSLOCK II INSTALLATION (GM only)

10.Wait until the L.E.D. light on the 791 goes out. (See page 9 for LED placement.)
11. Turn off the vehicle, the system has learned the resistor value.

NOTE: If the light does not illuminate on the 791 when you first plug it in, you need to erase the memory. See page 10.



NOTE: Do not plug the WHITE loop connector into the module unless your vehicle is equipped with a transponder system.

TRANSPONDER INSTALLATION Ford, Chrysler, all imports and some GMs

1. You must have a spare transponder key that will start the vehicle. You will need to insert this spare key inside the 791 module.
2. The wiring loop needs to be positioned around the ignition switch. Place the transponder loop around the ignition switch and as close to the key hole as possible.
3. Connect the RED wire from the module to a constant +12v supply.
4. Connect the BLUE wire to the center WHITE wire on remote starter modules with an external relay harness or the WHITE wire

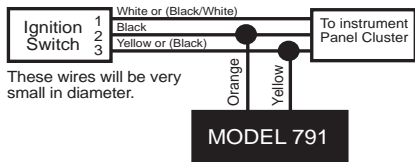
PASSLOCK I INSTALLATION (GM only)

This FUEL SYSTEM shutdown anti-theft system is based on a resistor built into the ignition switch. The system is recognized by a security light on the dashboard cluster.

1. Locate the harness coming from the ignition switch inside, find the three small wires YELLOW, BLACK and WHITE or (1) BLACK WITH WHITE STRIPE wire and (2) BLACK wires.
2. If your vehicle has the BLACK WITH WHITE STRIPE wire and two (2) BLACK wires, you will need to test the two (2) BLACK wires WITH THE IGNITION KEY IN THE ON OR RUN POSITION. Test both of these wires, one will show ground and the other will show positive.
3. Attach the YELLOW wire from the 791 bypass to the Passlock wire that shows a positive.
4. Attach the ORANGE wire from the 791 bypass to the wire that shows a ground.
5. Attach the RED wire to a constant +12V supply.
6. Attach the VIOLET wire to the bulb check wire. A 22 ga. BLACK wire in slot "D" or "E" coming from the ignition switch on the left hand side of the steering column located along with the heavy RED power wires in the ignition switch harness. This wire will test negative only during cranking.
7. Connect the BLUE wire to the center WHITE wire on remote starter modules with an external relay harness or the WHITE wire labeled "ignition negative" or the YELLOW wire and sometimes the YELLOW WITH BLACK STRIPE wire marked "security bypass out".

PASSLOCK I INSTALLATION (GM only)

8. Attach the **YELLOW WITH BLACK STRIPE** wire to the large **YELLOW WITH BLACK STRIPE** wire on the remote starter that is connected to the starter/crank wire on the ignition switch harness.
 9. Attach the **WHITE** wire from the bypass module to the large **WHITE** wire on the remote starter that is connected to the **PINK** ignition wire on the ignition switch harness.
 10. Put the key in the ignition and start the vehicle.
 11. Wait until the **L.E.D.** light on the 791 goes out. (See page 9 for LED placement.)
 12. Turn off the vehicle, the system has learned the resistor value.
 13. The **GREEN** wire is not used.
- NOTE:** If the light does not illuminate on the 791 when you first plug it in, you need to erase the memory. See page 10.



NOTE: Do not plug the **WHITE** loop connector into the module unless your vehicle is equipped with a transponder system.

PASSLOCK II INSTALLATION (GM only)

1. Locate the wire harness coming from the ignition switch. Inside, findthree (3) small gauge wires, a **RED WITH WHITE STRIPE** wire, an **ORANGE WITH BLACK STRIPE** wire or a **BLACK** wire, and a **YELLOW** wire on trucks, vans and SUVs. On cars find a **BLACK** wire, a **YELLOW** wire and a **WHITE** wire.
2. Attach the **YELLOW** wire to the Passlock **YELLOW** wire.
3. Attach the **RED** wire to a constant **+12V** supply.
4. Connect the **ORANGE** wire to the **ORANGE WITH BLACK STRIPE** wire or **BLACK** Passlock ground wire.
5. Connect the **BLUE** wire to the center **WHITE** wire on remote starter modules with an external relay harness or the **WHITE** wire labeled "ignition negative" or the **YELLOW** and sometimes the **YELLOW WITH BLACK STRIPE** wire marked "security bypass out".
6. Attach the **WHITE** wire to large **WHITE** ignition wire on the remote starter connected to the **PINK** wire on the ignition harness.
7. Attach the **YELLOW WITH BLACK STRIPE** wire to the large **YELLOW WITH BLACK STRIPE** wire on the remote starter that is connected to the starter/crank wire onthe ignition switch harness.
8. The **PURPLE** and the **GREEN** wires are not used. Tape these wires up and do not use.
9. Put the key in the ignition switch and start the vehicle.